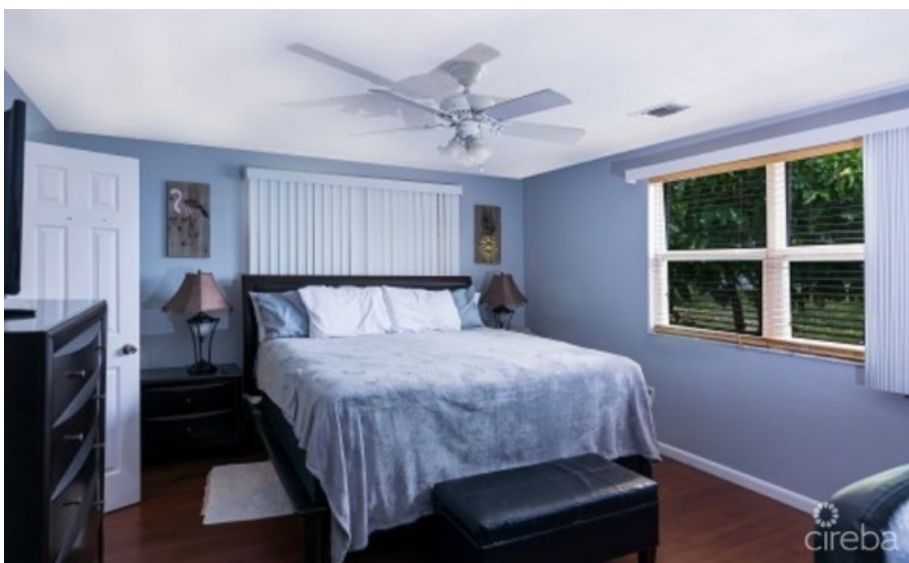
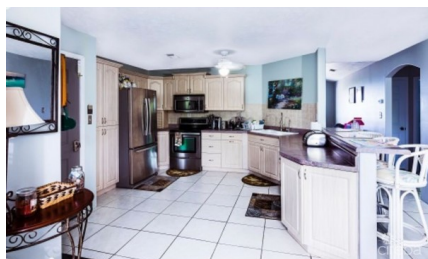


FAMILY HOME ON 1.63 ACRES - BLUFF EDGE

Cayman Brac East, Cayman Brac and Little Cayman, Cayman Islands

MLS# 416144

CI\$500,000





Kerri Kanuga
345-916-7020
kerri@tridentproperties.ky

Welcome to your dream home on the tranquil island of Cayman Brac, where paradise meets privacy. This beautiful 3-bedroom, 2-bathroom house is nestled on an expansive 1.63-acre lot atop the island's distinguished bluff edge. As you enter the home, you will be greeted with an inviting open floor plan designed for both functionality and elegance. The living space exudes warmth, with a stylish mix of modern amenities and classic Caribbean charm. Three spacious bedrooms with two well-appointed bathrooms, provide ample accommodation for family and guests. The generously sized kitchen, complete with modern appliances, serves as the heart of the home. Strategically positioned, the house takes full advantage of the scenic vistas provided by the bluff, and the vast 1.63-acre lot presents opportunities for further development. Imagine adding a luxurious pool, guesthouse, or tropical garden — the possibilities are truly endless. The location on the bluff provides a unique elevation that both enhances the view and provides a degree of protection against extreme weather conditions. This exquisite property offers more than a home - it delivers a lifestyle of peace, serenity, and potential in the heart of Cayman Brac. Whether you're looking for a vacation retreat or a forever home, this house is an exceptional find that combines the beauty of nature with the comforts of home. Don't miss out on the opportunity to make this island oasis your own.

Essential Information

Type	Status	MLS	Listing Type
Stand Alone Home (For Sale)	Current	416144	Single Family Home

Key Details

Bed	Bath	Block & Parcel	Den
3	2	106A,23	No
Year Built	Acreage		
2004	1.6300		

Additional Feature

			Block	Lot Size
			106A	1.63
Parcel	Views	Foundation	Furnished	
23	Garden View	Slab	Partially	
Zoning				
Low Density residential				