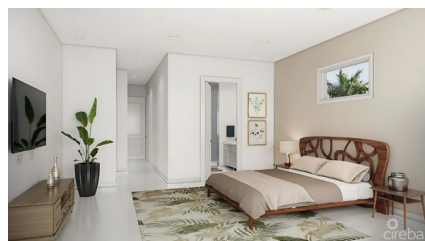


## PRIVE PHASE 1 2 BED 2.5BATH, POOL VIEW

South Sound, South Sound, Cayman Islands

MLS# 419480

**CI\$775,000**





**Kerri Kanuga**  
345-916-7020  
kerri@tridentproperties.ky

Welcome home to South Sounds latest community at Prive 3. Exclusive Community Living Set within a lush six-acre site in South Sound, Prive offers a rare blend of privacy and pres-tige, with only 36 townhomes and 16 villas in the entire development. This limited availability ensures a sense of exclusivity and tranquility, further enhanced by a gated entrance, tree-lined streets, and individually fenced private yards. The community is thoughtfully de-signed to foster both security and serenity, creating a peaceful enclave just minutes from George Town and conveniences. **Luxury Interiors and Functional Design** This spacious 2 bedroom, 2.5-bath corner townhome spans 1,647 sq ft and features a private garden and carport. With 10-foot ceilings, hurricane-impact windows, and contemporary recessed lighting, each home offers durability and style. The chef-inspired kitchen comes equipped with stainless steel appliances and customizable quartz countertops, blending form with function. The oversized master suite with double closets, ensuite baths, and Romeo and Juliet balconies elevate everyday living. **Family- and Pet-Friendly Amenities** Prive is built with families and pet lovers in mind. Children will love the bright splash park designed for safe, active fun, while wide walking paths and open green spaces create an ideal setting for pets and outdoor activities. The development’s layout encourages a life-style that values both community engagement and individual privacy. Find out how Prive 3 may be the ideal property for you – inquire today. Assignment Contract

Essential Information

Type	Status	MLS	Listing Type
<b>Condominium (For Sale)</b>	<b>Current</b>	<b>419480</b>	<b>Condo</b>

Key Details

Block & Parcel	Den	Year Built
<b>21C,164H3A</b>	<b>No</b>	<b>2025</b>
Pets Allowed		
<b>Yes</b>		

Additional Feature

Floor Level  
**1**