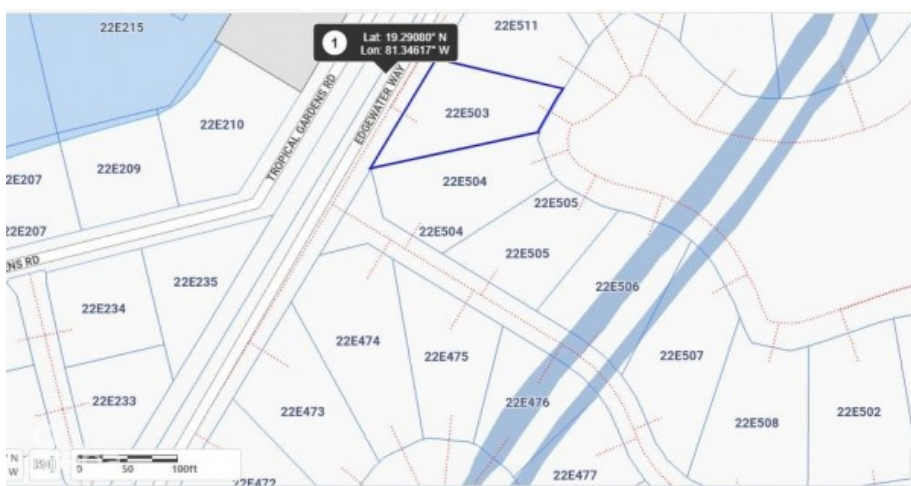


HARBOUR REACH

Prospect, Spotts and Prospect, Cayman Islands

MLS# 419227

CI\$495,000





Kerri Kanuga
345-916-7020
kerri@tridentproperties.ky

Prime location, in a sought-after community on the canal, in a serene environment under CI 500K, sounds like paradise & It Is paradise. Canal view house lot in the prestigious Harbour Reach community in Grand Harbour. Harbour Reach is Canal lot community with direct access to the North Sound with a cantilevered 40 foot dock, this and these lots are all filled with compacted aggregate and safety retained by a keystone seawall which means there is no need for the added expense of pilings. Harbour Reach offers a 24-7 manned gatehouse with strong covenants to ensure high standards and quality upliftment of this beautifully landscaped community conveniently located within walking distance of Harbour Walk complex & Grand Harbour Shopping Complex with restaurants, café, Hurleys supermarket. Agent Owned

Essential Information

Type	Status	MLS	Listing Type
Land (For Sale)	Current	419227	Low Density Residential

Key Details

Width	Block & Parcel	Depth	Block & Parcel	Den
95.00	22E,503A	135.00	22E,503A	No
Acreage				
0.2600				

Additional Feature

			Block
			22E
Parcel	Views	Zoning	
503A	Canal View	Low Density residential	