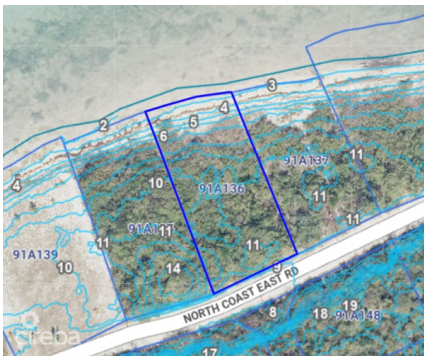


BETTY BAY 0.38 ACRE, LITTLE CAYMAN OCEANFRONT PARCEL

Little Cayman East, Cayman Brac and Little Cayman, Cayman Islands

MLS# 419211

CI\$249,000





Kerri Kanuga
345-916-7020
kerri@tridentproperties.ky

Tucked away on the peaceful northeast coast of Little Cayman, this exceptional 0.38-acre parcel in the coveted Betty Bay offers the perfect canvas for your dream beach house. With an impressive 12 feet of elevation above sea level from the road, you're not just building a home — you're securing peace of mind. Imagine waking up in paradise to the gentle lull of waves and stepping out onto your very own stretch of white sandy beach. It's raw, untouched Caribbean beauty at its finest. Betty Bay is known for its tranquility, pristine environment, and exclusivity — making this a rare opportunity to own in one of Little Cayman's most desirable locations. Whether you're planning a private retreat or a barefoot luxury getaway, this parcel offers the space, elevation, and setting to make your vision a reality. Oceanfront parcels of this quality in Little Cayman don't come around often. Don't let this one slip by.

Essential Information

Type	Status	MLS	Listing Type
Land (For Sale)	Current	419211	Little Cayman/Cayman Brac

Key Details

Width	Block & Parcel	Depth	Block & Parcel	Den
90.00	91A,136	190.00	91A,136	No
Acreage				
0.3800				

Additional Feature

				Block
				91A
Parcel	Views	Sea Frontage	Road Frontage	
136	Beach Front	90	192	
Soil				
Rock				