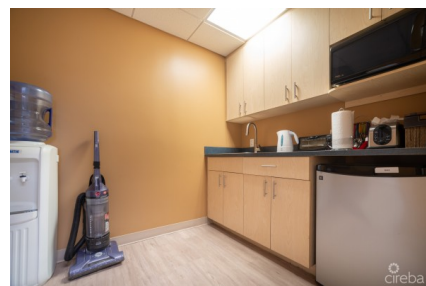
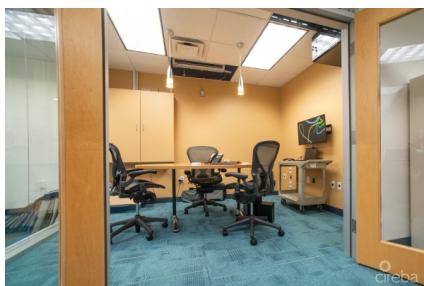


## CORPORATE PLAZA - 2 COMMERCIAL UNITS FOR OFFICE SPACE

George Town Centr, Seven Mile Beach, Cayman Islands

MLS# 418542

**US\$1,350,000**





**Kerri Kanuga**  
345-916-7020  
kerri@tridentproperties.ky

81 Godfrey Nixon Way - Office Space For Sale !! Elevate your business presence with this exceptional office space consisting of 2 units nestled in the heart of George Town. Boasting a prime location in one of the most sought-after areas of the Cayman Islands, this meticulously crafted office presents an unparalleled opportunity for investors and entrepreneurs alike. Strategically positioned to capitalize on the bustling energy of George Town's business district, this property offers unparalleled visibility and accessibility, making it an ideal hub for corporate headquarters, professional firms, or creative ventures seeking to make their mark in the thriving commercial landscape. Featuring sleek, modern design and premium finishes throughout, this meticulously maintained space is ready to accommodate a variety of business needs. From expansive open-plan layouts to a versatile meeting room, every aspect of this office has been thoughtfully designed to inspire productivity and foster success. Beyond its impressive interiors, this property also offers convenient amenities and services, including ample parking, proximity to public transportation, and easy access to a wealth of dining, shopping, and entertainment options near Camana Bay. Don't miss out on this rare opportunity to secure your foothold in George Town's dynamic commercial scene. Contact us today to schedule a private viewing and discover the endless possibilities that await within this prestigious office space.

Essential Information

|                       |         |        |              |
|-----------------------|---------|--------|--------------|
| Type                  | Status  | MLS    | Listing Type |
| Commercial (For Sale) | Pen/Con | 418542 | Office       |

Key Details

|                |         |     |            |
|----------------|---------|-----|------------|
| Block & Parcel | Acreage | Den | Year Built |
| 13D,421H9&H10  | 0.8930  | No  | 1996       |

Additional Feature

|            |               |        |            |
|------------|---------------|--------|------------|
|            |               |        | Block      |
|            |               |        | 13D        |
| Lot Size   | Parcel        | Views  | Foundation |
| 0.89       | 421H9&H10     | Inland | Slab       |
| Zoning     | Road Frontage |        |            |
| Commercial | 160           |        |            |

Property Feature

Furnished