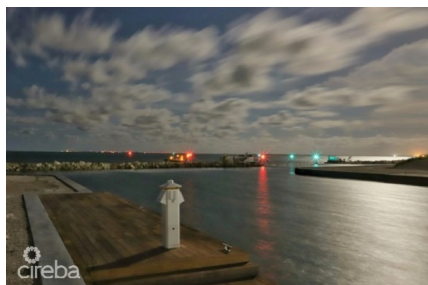
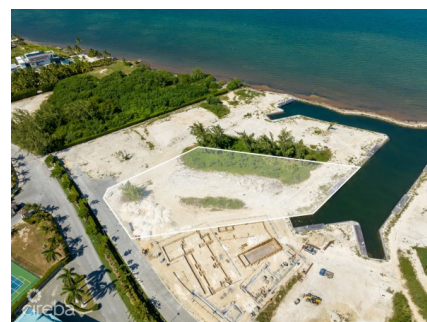
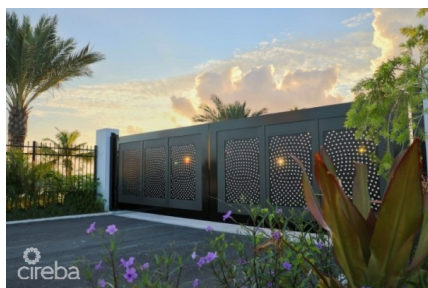


DIAMOND'S EDGE ESTATE LOT #3

W Bay Bch North, West Bay, Cayman Islands

MLS# 416553

US\$4,250,000





Kerri Kanuga
345-916-7020
kerri@tridentproperties.ky

We are beyond delighted to represent Estate Lot #3 in the exclusive waterfront subdivision, Diamond’s Edge. Emerging from the shores of Grand Cayman’s North Sound, this development is a true work of art. Impeccable attention to detail honours and appreciates the breathtaking views and billion-dollar Seven Mile Beach corridor location. As a resident you are welcomed home at the distinguished guard house and ushered through soothing water features and crystal studded gates. Meander through lush landscaping with curbed and lighted streets guiding you to your waterfront residence. Unprecedented and unobstructed views of the North Sound have been afforded to each parcel together with custom Brazillian IPE docks, complete with full service water and electrical stations and LED lights. Each parcel's building footprint has been filled to 8’ above sea level and ready to receive your dream home. The exclusive branding that is Diamond’s Edge can be felt through-out the subdivision including the exclusive channel directly into the North Sound. Your investment is protected by strict, yet reasonable covenants affording each owner quality assurances within the privilege of individuality.

Essential Information

Type	Status	MLS	Listing Type
Land (For Sale)	Current	416553	Low Density Residential

Key Details

Width	Block & Parcel	Depth	Block & Parcel	Den
250.00	17A,365	310.00	17A,365	No
Acreage				
1.1180				

Additional Feature

Block	Parcel	Views	Zoning
17A	365	Canal Front, Water View	Hotel/Tourism
Sea Frontage	Road Frontage	Soil	
140	250	Marl	