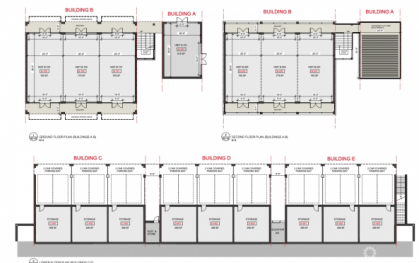


THE SHOPS AT BUTTONWOOD - 2563 SQ FT OFFICE

George Town Centr, Seven Mile Beach, Cayman Islands

MLS# 417991

US\$2,107,150





Kerri Kanuga
 345-916-7020
 kerri@tridentproperties.ky

Imagine a small community in close proximity to George Town, the airport and Camana Bay. One where children have room to roam, mom can meet friends for coffee and kids can walk to school, participate with others in sports, tutor sessions, supervised playtime, and so much more. Buttonwood Park is envisioned to be all of the above and so much more. The new Island Primary School serves as the heart of the neighborhood, will educate up to 350 children in grades K-6. In 2025 the new private high school will have the capacity for 250 students in grades 7-11. All the makings for an idyllic neighborhood. The community will also feature a commercial centre, up to 42 residences, nature park, and sports fields. The Development team and Corcoran Cayman Islands has teamed with Evolving Island to develop the 28,000 SF commercial centre and in the future, phase a residential enclave of up to 42 homes. This development will be ideal for young families and professionals desirous of home ownership in Grand Cayman in a truly unique neighborhood where kids can actually walk to school, participate in tutoring classes and have access to a number of after-school programmes, all within a short distance of their home. We are placemakers, believing that every space we sell should accentuate the neighborhood and families who call this "home". Only a few select entrepreneurs will be able to seize this unique opportunity. Hopefully, our list of merchants and service providers will spark an interest in your plans for the future.

Essential Information

Type Commercial (For Sale)	Status Current	MLS 417991	Listing Type Offices/Mixed Use
--------------------------------------	--------------------------	----------------------	--

Key Details

Block & Parcel 20E,87H1E201/202/203	Acreage 1.2360	Den No	Year Built 2025
---	--------------------------	------------------	---------------------------

Additional Feature

Views Garden View	Foundation Slab	Zoning Commercial Neighbourhood	Road Frontage 250	Block 20E	Lot Size 1.24	Parcel 87H1E201/202/203
-----------------------------	---------------------------	---	-----------------------------	---------------------	-------------------------	-----------------------------------