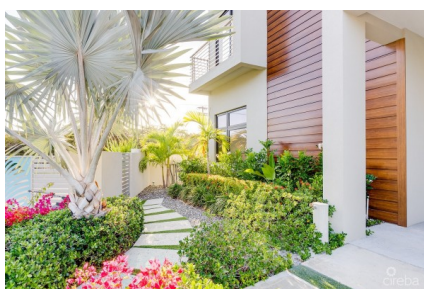
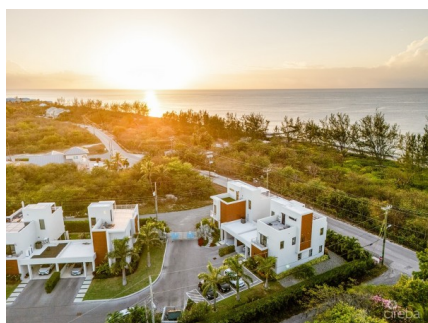


## BLUE PALMS #2 - OCEAN VIEWS

W Bay North West, West Bay, Cayman Islands

MLS# 417450

**CI\$1,299,000**





**Kerri Kanuga**  
345-916-7020  
kerri@tridentproperties.ky

Nestled in an exclusive gated complex of only 8 units, this brand-new 4-bedroom + den boasts luxurious features and contemporary design throughout. As you approach, sleek architecture and lush landscaping set the tone for the sophistication inside. The small, gated complex ensures security and exclusivity while maintaining a warm sense of community. This impeccably designed home features modern finishes and abundant natural light. The open-concept layout creates an inviting space for both unwinding and entertaining. Spanning over 3,400 square feet, it includes 4 spacious bedrooms, including a master suite. The 3rd floor den offers a cozy hangout space which can also be converted to an office, home gym, or playroom. The heart of the home—the kitchen—is equipped with top-of-the-line appliances and custom ceiling-high cabinets, elevating the space. Waterfall edge quartz countertops add elegance, while porcelain tiles provide durability. Wired for smart home technology, you can control lighting, temperature, security, and blinds at the touch of a button. It’s also pre-wired for solar panels, reducing energy costs and supporting sustainability. As if it wasn’t perfect enough, this home includes a private plunge pool and shaded pergola—ideal for lounging or hosting outdoor gatherings. The rooftop terrace features a built-in BBQ and panoramic Caribbean Sea views. Don’t just imagine your dream home—make it your reality. Schedule a viewing today and experience the magic of seaside living.

Essential Information

Type	Status	MLS	Listing Type
<b>Condominium (For Sale)</b>	<b>Current</b>	<b>417450</b>	<b>Condo</b>

Key Details

Block & Parcel	Den	Year Built
<b>3D,184H2</b>	<b>No</b>	<b>2023</b>
Pets Allowed		
<b>Yes</b>		

Additional Feature

Foundation	Floor Level
<b>Slab</b>	<b>1</b>

Property Feature

Furnished