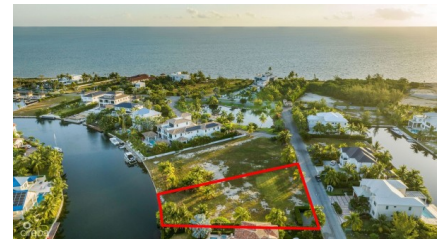
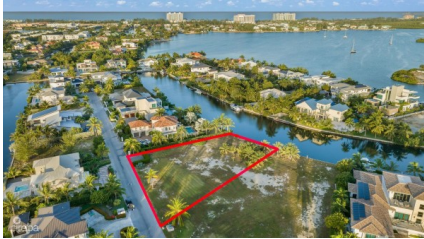


OVERSIZED LAND LOT IN LALIQUE QUAY

W Bay Bch North, West Bay, Cayman Islands

MLS# 417424

US\$2,900,000



Kerri Kanuga

345-916-7020

kerri@tridentproperties.ky

Nestled within the esteemed Lalique Quay of Crystal Harbour, this parcel of land, one of the few remaining, boasts dimensions of 176 feet in width and 234 feet in depth. It stands as an exceptional canvas for realizing your dream home amidst the lavish surroundings of this exclusive community. Serene waterfront panoramas envelop the expansive 0.62-acre lot. This property offers a unique advantage with a retaining wall readily available, facilitating the construction of a private dock. You'll enjoy unparalleled access to a wealth of amenities, including pristine beaches, golf courses, and a vibrant array of dining and entertainment options along the renowned Seven Mile Corridor. Whether your vision leans towards a contemporary sanctuary or a timeless retreat infused with the essence of Caribbean charm, this oversized parcel in Crystal Harbour invites you to embark on an extraordinary journey of architectural creativity and coastal living at its most refined.

Essential Information

Type	Status	MLS	Listing Type
Land (For Sale)	Current	417424	Low Density Residential

Key Details

Width	Block & Parcel	Depth	Block & Parcel	Den
175.90	17A,276	234.00	17A,276	No
Acreage				
0.6201				

Additional Feature

Block	Parcel	Views	Zoning
17A	276	Canal Front	Low Density residential
Sea Frontage	Road Frontage	Soil	
96	175.9	Other	