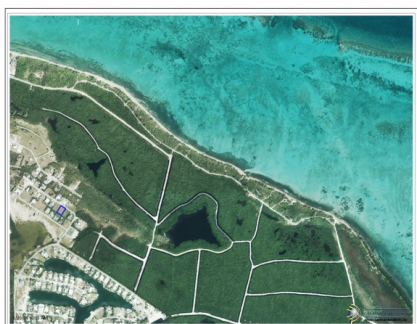


## Prime Location Shorecrest Circle House Lot

W Bay North East, West Bay, Cayman Islands

MLS# 417055

**CI\$445,000**





**Leslie Bromfield**  
345-939-7586  
leslie@tridentproperties.ky

Welcome to Shorecrest Circle, where an incredible opportunity awaits you! This vacant land, located in the highly sought-after Shores neighbourhood, is now available for sale. Nestled within a gated community, this prime location offers exclusivity, security, and a truly serene living experience. Boasting a generous lot size of 100' by 143' depth, this property provides ample space for you to create your dream home. With its low density zoning, this parcel of land provides the perfect canvas for your architectural aspirations. Convenience is key when it comes to this remarkable location. Just minutes away, discover the world-renowned Seven Mile Beach and the vibrant Camana Bay. Whether you enjoy lounging on pristine sandy shores or indulging in exquisite dining and shopping experiences, everything you desire is within reach. For those seeking an active lifestyle, this community offers more than just a place to call home. Take advantage of the shared boat launch for endless adventures on the crystal-clear waters. Engage in friendly matches on the tennis and pickleball courts with neighbours turned friends. Rest assured that your investment is protected by a robust neighborhood covenant and fully manned security entrance. This tranquil enclave provides a quiet and peaceful atmosphere to create your personal paradise. Additionally, an easy commute to work ensures you can strike a perfect balance between professional demands and personal leisure. Don't miss out on this incredible opportunity to build your dream home in the prestigious Shores neighborhood. Embrace a lifestyle of luxury, serenity, and convenience. Contact me today to make this exceptional property yours! Image courtesy of [www.caymanlandinfo.ky](http://www.caymanlandinfo.ky).

Essential Information

Type	Status	MLS	Listing Type
Land (For Sale)	Current	417055	Low Density Residential

Key Details

Width	Block & Parcel	Depth	Block & Parcel	Den
100.00	9A,749	143.00	9A,749	No
Acreage				
0.3299				

Additional Feature

		Block	Parcel	Views
		9A	749	Garden View
Zoning	Possession	Title	Trees	
Low Density residential	At Closing	Freehold	None	
Road Surface	Topography	How Shown		
Asphalt	Filled	By Appointment/List		

Property Feature

Covenants