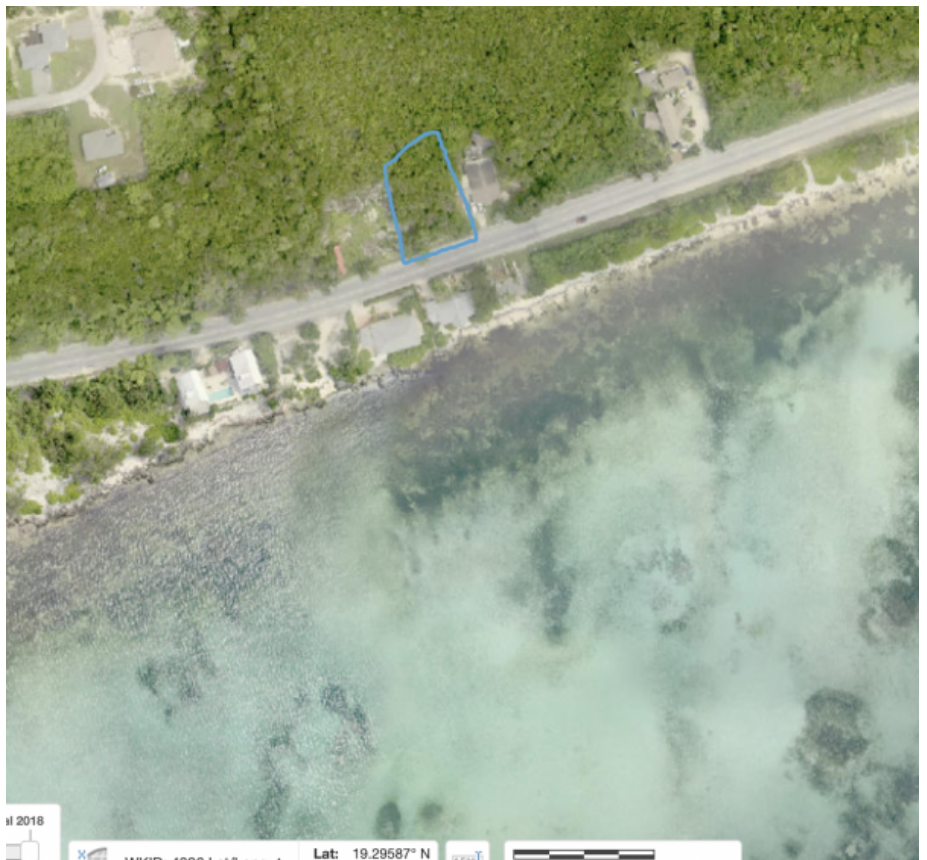


CI\$248,000





Malcolm Eden
345-916-8076
malcolm@tridentproperties.ky

Land for Sale in beautiful Bodden Town/Pease Bay. Located just before Breakers, the lot is 0.2548 Acres. 14FT+ Elevation, lot requites no fill and is ready to build. Swim and Snorkel in beautiful Pease Bay located directly accross the road. Asking only CI\$248,000 and very open to offers. Agent owned. Block and Parcel images sourced from www.caymanlandinfo.ky

Essential Information

Type	Status	MLS	Listing Type
Land (For Sale)	Current	416415	Low Density Residential

Key Details

Width	Block & Parcel	Depth	Block & Parcel	Den
90.00	48C,288	130.00	48C,288	No
Acreage				
0.2548				

Additional Feature

Block	Parcel	Views	Zoning
48C	288	Beach View, Garden View	Low Density residential
Possession	Frontage Road	Title	Trees
At Closing	City Maintained	Freehold	Partial Covered
Road Frontage	Road Surface	Topography	How Shown
90	Asphalt	Filled	Drive by
Soil			
Rock			