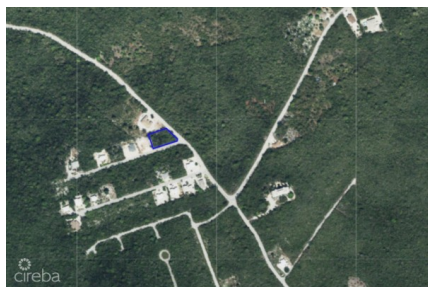
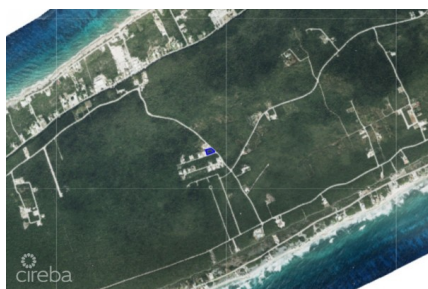


## CORNER LOT ON THE BLUFF - CAYMAN BRAC - .36 ACRES

Cayman Brac Center, Cayman Brac and Little Cayman, Cayman Islands

MLS# 420927

**CI\$59,500**





**Kerri Kanuga**  
 345-916-7020  
 kerri@tridentproperties.ky

Discover the perfect opportunity to build your island dream home on this attractive **0.36-acre corner lot** located on the desirable Bluff in **Cayman Brac**. Situated within an established residential development, this generously sized parcel offers the ideal balance of convenience and peaceful island living. Enjoy easy access to schools, shopping, restaurants, healthcare services, and other everyday amenities, while still embracing the quiet tranquility and relaxed lifestyle that make Cayman Brac so special. The elevated Bluff location provides a desirable setting with cooling breezes and a welcoming neighborhood atmosphere. Whether you're planning a permanent residence, vacation retreat, or investment property, this well-positioned corner lot presents an excellent opportunity to create your own piece of paradise in one of the Cayman Islands' most peaceful communities. **Highlights:** \* 0.36-acre corner lot \* Located on the Bluff, Cayman Brac \* Established residential development \* Easy access to all amenities \* Quiet, peaceful surroundings \* Ideal for a family home or investment property \* Desirable elevated location with island charm Experience the best of Cayman Brac living—where convenience meets tranquility.

## Essential Information

Type <b>Land (For Sale)</b>	Status <b>New</b>	MLS <b>420927</b>	Listing Type <b>Low Density Residential</b>
--------------------------------	----------------------	----------------------	--

## Key Details

Width <b>168.00</b>	Block & Parcel <b>99A,227</b>	Depth <b>102.00</b>	Block & Parcel <b>99A,227</b>	Den <b>No</b>
Acreage <b>0.3631</b>				

## Additional Feature

Block <b>99A</b>	Parcel <b>227</b>	Views <b>Garden View</b>
---------------------	----------------------	-----------------------------

## Property Feature

Road Frontage