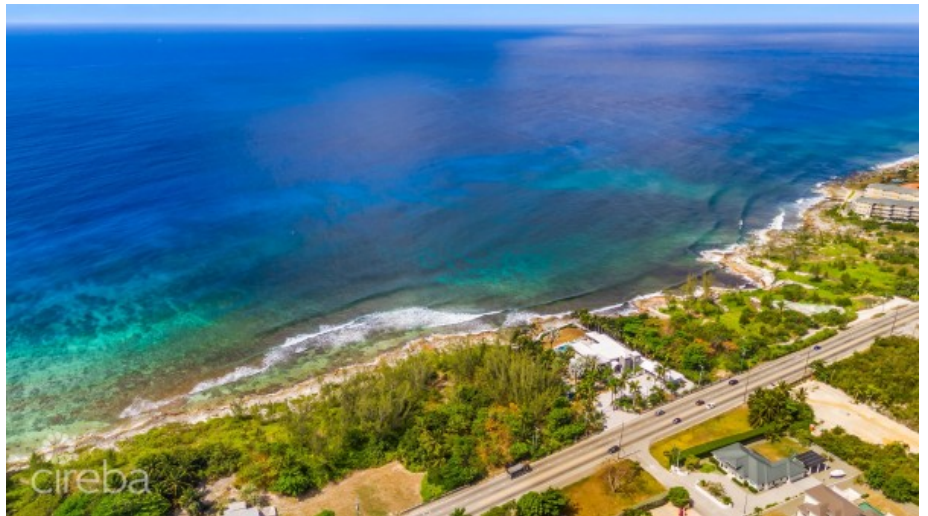
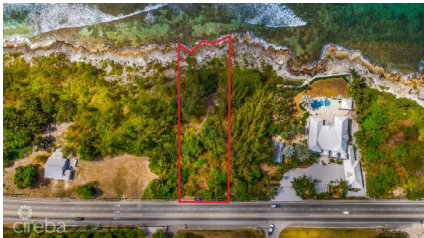


## SPOTTS OCEANFRONT LAND

Seven Mile Beach, Seven Mile Beach, Cayman Islands

MLS# 420771

**CI\$1,275,000**





**Kerri Kanuga**  
 345-916-7020  
 kerri@tridentproperties.ky

This exceptional 0.72-acre waterfront parcel offers a rare opportunity to develop within a highly versatile Beach Resort/Residential zoning. The designation allows for a wide range of uses, including a private detached residence, duplexes, townhouses, apartment buildings, or tourism-related developments—providing flexibility for both investors and homeowners. The property benefits from no restrictive covenants, giving buyers greater freedom in design and development. The site gently rises to an elevation of 13 feet, enhancing both views and natural drainage. The land remains in its natural state, with no prior filling or leveling, offering a blank canvas for your vision. The soil composition—a blend of light, sandy textures mixed with clay—supports a variety of fruit trees, plants, and coastal vegetation, ideal for landscaping or eco-conscious development. Adding to its appeal, the shoreline features natural Ironshore rock, which helps protect the property from coastal erosion and wave impact—an important advantage over unprotected sandy beachfront sites. This is a unique opportunity to secure a prime waterfront location with strong development potential and natural coastal resilience.

## Essential Information

Type <b>Land (For Sale)</b>	Status <b>Reduced</b>	MLS <b>420771</b>	Listing Type <b>Low Density Residential</b>
--------------------------------	--------------------------	----------------------	--

## Key Details

Width <b>92.04</b>	Block & Parcel <b>25C,6</b>	Depth <b>356.87</b>	Block & Parcel <b>25C,6</b>	Den <b>No</b>
Acreage <b>0.7200</b>				

## Additional Feature

Block <b>25C</b>	Parcel <b>6</b>	Views <b>Ocean View, Ocean Front</b>	Zoning <b>Beach Resort/Residential</b>
---------------------	--------------------	---	---

Sea Frontage  
**99.6**

## Property Feature

Road Frontage