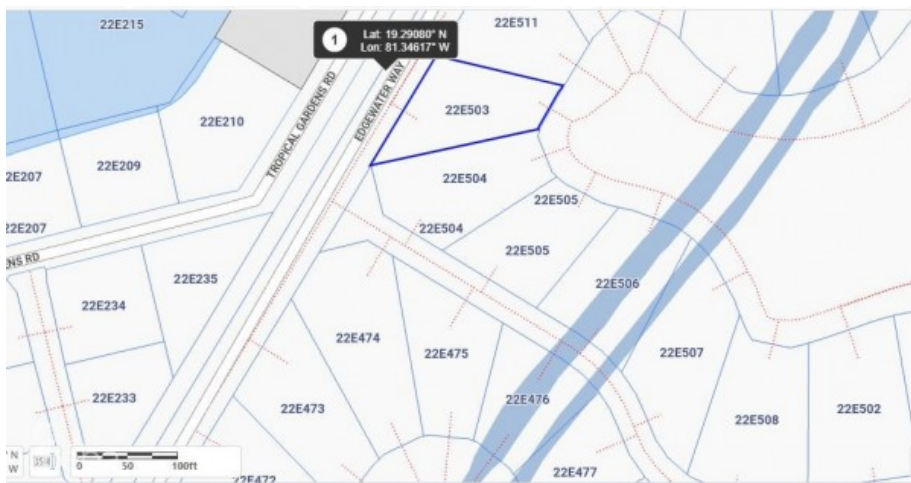


PRIME LOCATION CANAL FRONT HARBOUR REACH

Prospect, Spotts and Prospect, Cayman Islands

MLS# 419227

CI\$539,000





Kerri Kanuga
 345-916-7020
 kerri@tridentproperties.ky

Prime location, in a sought-after community on the canal, in a serene environment, sounds like paradise & It Is paradise. Canal view house lot in the prestigious Harbour Reach community in Grand Harbour. Harbour Reach is Canal lot community with direct access to the North Sound with a cantilevered 40 foot dock, this and these lots are all filled with compacted aggregate and safety retained by a keystone seawall which means there is no need for the added expense of pilings. Harbour Reach offers a 24-7 manned gatehouse with strong covenants to ensure high standards and quality upliftment of this beautifully landscaped community conveniently located within walking distance of Harbour Walk complex & Grand Harbour Shopping Complex with restaurants, café, Hurleys supermarket. Cash purchase preferred.

Essential Information

Type	Status	MLS	Listing Type
Land (For Sale)	Back On The Market	419227	Low Density Residential

Key Details

Width	Block & Parcel	Depth	Block & Parcel	Den
95.00	22E,503A	135.00	22E,503A	No
Acreage				
0.2600				

Additional Feature

Parcel	Views	Zoning	Block
503A	Canal View	Low Density residential	22E

Property Feature

Sea Frontage