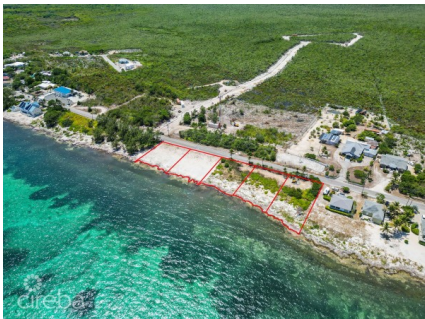
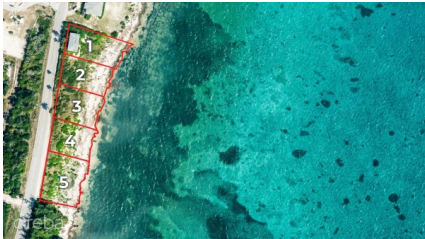


## PRIME OCEANFRONT LAND - HOUSE LOT #1

Colliers, Rum Point/Kaibo, Eastern Districts & North Side, Cayman Islands

MLS# 420750

**CI\$365,000**





**Kerri Kanuga**  
 345-916-7020  
 kerri@tridentproperties.ky

An exceptional opportunity to secure a generous-sized oceanfront parcel along the stunning coastline of Colliers in East End. Featuring impressive depth and acreage, this end parcel stands out for both its scale and long-term investment potential, with flexibility for a future family residence, beachfront cottage, subdivision, or to simply land bank. The gently sloping parcel offers breathtaking elevated sea views and sits at approximately 16 feet above sea level. Additionally, it blends a unique combination of white sandy beach bottom, iron shore and natural coves with direct walk-out access to the sea, offering both visual appeal and shoreline protection. The bonus? Great snorkelling and swimming alongside abundant marine life! A soil test has revealed solid rock beneath the property, providing an ideal foundation for construction with no fill required. Water and electricity are already available to the area, and preliminary subdivision\* plans are currently underway, subject to final approvals and issuance of new parcel numbers. East End is sought-after for its natural beauty, quieter lifestyle, and increasing amenities. This parcel is conveniently located near Health City, the Queen Elizabeth II Botanic Park, Parrot Sanctuary, restaurants like Tukka (close enough you can walk to), and highly-rated dive operations. Morritt’s Resort is also approximately 1.2 miles away. As infrastructure and development continue expanding eastward, demand for well-positioned oceanfront land in this area is expected to remain strong. At this fantastic price, parcels like this have become exceptionally limited in Grand Cayman. It’s an outstanding opportunity to secure a premium piece of Cayman coastline whether for personal use or as a future investment. It’s possibilities are only limited by your imagination! \*Subdivision subject to final approvals.

## Essential Information

Type	Status	MLS	Listing Type
<b>Land (For Sale)</b>	<b>New</b>	<b>420750</b>	<b>Low Density Residential</b>

## Key Details

Width	Block & Parcel	Depth	Block & Parcel	Den
<b>70.70</b>	<b>74A,157LOT1</b>	<b>166.50</b>	<b>74A,157LOT1</b>	<b>No</b>
Acreage				
<b>0.2375</b>				

## Additional Feature

Block  
**74A**

Parcel  
**157LOT1**

Views  
**Beach Front, Water  
Front**