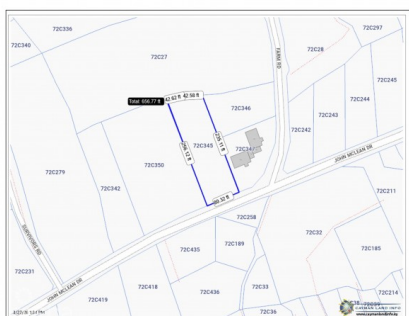


## EAST END LAND 0.45 ACRES IN JOHN MCLEAN DRIVE

East End, Rum Point/Kaibo, Eastern Districts & North Side, Cayman Islands

MLS# 420645

**CI\$265,000**





**Kerri Kanuga**  
 345-916-7020  
 kerri@tridentproperties.ky

This great Residential Lot of 0.4539-acres located in East End community, Grand Cayman, offers a unique opportunity for those wishing to build their dream home in a tropical paradise setting. Located in a Medium Density Residential area is large enough to have all the potential to build a small condominium or a large Duplex / Triplex. The width and depth measurements are approximately: - Width: 80.32 feet - Depth: 256 feet on one side and 235 feet on the other. Strategic Location: Located a short distance from the stunning East End beaches, with easy access to restaurants, shops, and essential services. Nearby Amenities: • Beaches: Just 2 minutes by car or 14 minutes' walk from beautiful white sandy beaches, ideal for relaxation, swimming, and water activities. • Dining: Close to a variety of restaurants offering local and international cuisine, allowing you to enjoy delicious meals with sea views. • Activities: Easy access to diving centers, snorkeling, and other recreational activities, making East End a sought-after destination for nature and adventure lovers. • Convenience: Shops, schools, and healthcare services are easily reachable, ensuring maximum convenience for residents. • East End Primary School: 1 minute drive or 4-minute walk • Health City Hospital: 5 minutes by car • Gas Station: 2 minutes by car Investment Opportunity: East End is one of the growing areas of Grand Cayman, with potential for property value appreciation, making this lot a smart choice for investors. Don't miss the chance to own a piece of paradise in East End, Grand Cayman. Contact us today for more information and to schedule an on-site visit. Your Real Estate Dream come True with us.

## Essential Information

Type	Status	MLS	Listing Type
<b>Land (For Sale)</b>	<b>Current</b>	<b>420645</b>	<b>Med Density Residential</b>

## Key Details

Width	Block & Parcel	Depth	Block & Parcel	Den
<b>80.00</b>	<b>72C,345</b>	<b>240.00</b>	<b>72C,345</b>	<b>No</b>
Acreage				
<b>0.4500</b>				

## Additional Feature

Views	Block	Parcel
<b>Inland</b>	<b>72C</b>	<b>345</b>