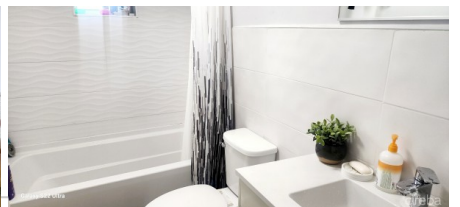
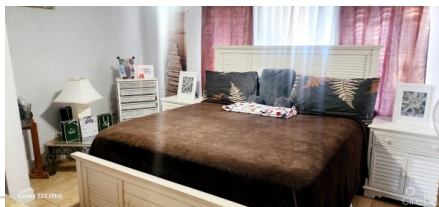
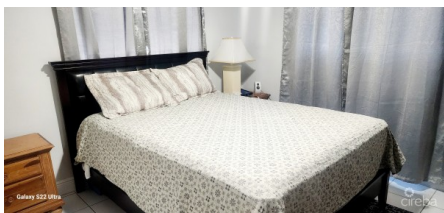


## **LEMON BREEZE - BLOCK A - UNIT #2**

Spotts, Spotts and Prospect, Cayman Islands

MLS# 420542

**CI\$489,000**





**Kerri Kanuga**  
 345-916-7020  
 kerri@tridentproperties.ky

This beautiful 2 bedroom 2 bathroom unit is located in the Lemon Breeze development and is ideally situated in the prospect corridor. This unit is perfect for a homeowner looking to customize their space or an investor seeking a high-yield renovation project. While the unit requires cosmetic updates and repairs, the fundamental layout is excellent, featuring a spacious living area and two well-proportioned bedrooms and two bathrooms. Lemon Breeze remains one of the popular communities due to its proximity to George Town and Grand Harbour. Rarely do units at this price point become available in this area. With some vision and TLC, this property can be transformed into a modern gem or a high-performing rental asset.

## Essential Information

|                                       |                          |                      |                              |
|---------------------------------------|--------------------------|----------------------|------------------------------|
| Type<br><b>Condominium (For Sale)</b> | Status<br><b>Current</b> | MLS<br><b>420542</b> | Listing Type<br><b>Condo</b> |
|---------------------------------------|--------------------------|----------------------|------------------------------|

## Key Details

|                                    |                  |                           |
|------------------------------------|------------------|---------------------------|
| Block & Parcel<br><b>24E,262H2</b> | Den<br><b>No</b> | Year Built<br><b>1989</b> |
|------------------------------------|------------------|---------------------------|

Pets Allowed  
**Yes**

## Additional Feature

|                               |                         |                           |
|-------------------------------|-------------------------|---------------------------|
| Furnished<br><b>Partially</b> | Floor Level<br><b>1</b> | Foundation<br><b>Slab</b> |
|-------------------------------|-------------------------|---------------------------|