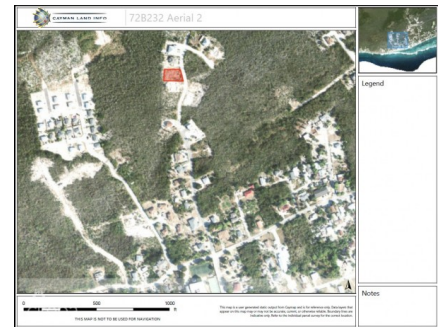
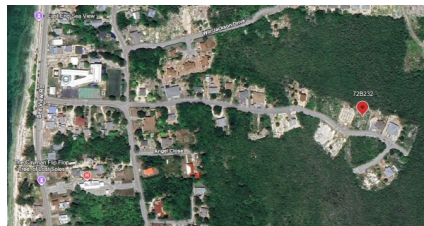
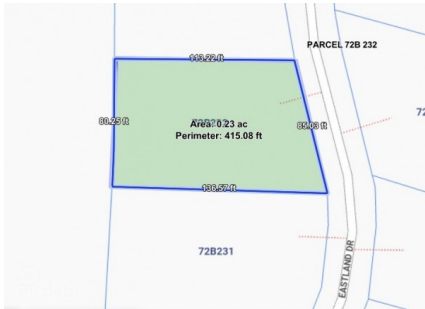
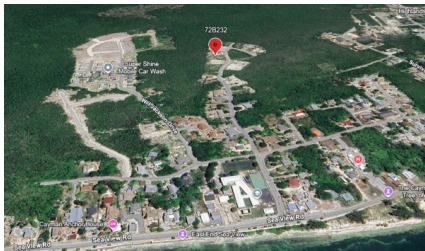


PRIME EAST END 0.23 ACRE MEDIUM DENSITY LOT NEAR EAST END PRIMARY SCHOOL

East End, Rum Point/Kaibo, Eastern Districts & North Side, Cayman Islands

MLS# 420466

CI\$125,000





Kerri Kanuga
 345-916-7020
 kerri@tridentproperties.ky

This 0.2319-acre (10,101 sq ft) medium density residential lot is ideally located in East End, just minutes from East End Primary School and surrounding community amenities. Offering excellent development potential, the medium density zoning allows for duplex or multi-unit residential construction (subject to planning approval), making it an attractive opportunity for builders, investors, or first-time homeowners looking to develop in a growing area. The parcel is level and well-proportioned, providing flexibility in design and layout. Located in a quiet residential pocket, yet within convenient access to schools, shops, and the main East End roadway. East End continues to see steady demand for affordable residential development, making this a smart long-term investment or build-ready opportunity. Contact today for further details or to arrange a site visit.

Essential Information

Type Land (For Sale)	Status Current	MLS 420466	Listing Type Med Density Residential
--------------------------------	--------------------------	----------------------	--

Key Details

Width 85.00	Block & Parcel 72B,232	Depth 136.00	Block & Parcel 72B,232	Den No
-----------------------	----------------------------------	------------------------	----------------------------------	------------------

Acreage
0.2319

Additional Feature

Zoning Medium Density Residential	Block 72B	Parcel 232	Views Garden View
	Road Frontage 85	Soil Rock	