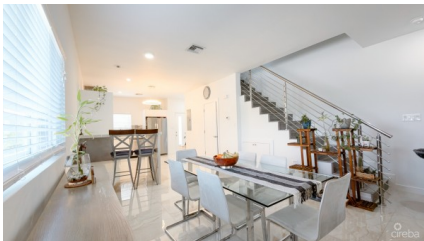


OCEAN REACH 2 BED TOWNHOUSE

George Town Centr, Seven Mile Beach, Cayman Islands

MLS# 420465

CI\$575,000





Kerri Kanuga
345-916-7020
kerri@tridentproperties.ky

Bright & Modern 2-Bedroom Townhouse with Lake Views – Ocean Reach Townhouse Explore this bright and modern 2-bedroom, 3-bathroom townhouse at Ocean Reach on Old Crewe Road. Featuring high ceilings, a large backyard overlooking a lake, spacious interiors, and excellent amenities, this family-friendly home is minutes from schools, Grand Harbour, and George Town. Perfect for first-time buyers or investors. Modern, Move-In-Ready Living with Exceptional Light and Space Welcome to Ocean Reach Townhouse, a beautifully designed 2-bedroom, 3-bathroom home set in one of George Town’s most convenient residential pockets. As a corner unit, this property enjoys abundant natural light and an expansive sense of space, creating a bright and uplifting atmosphere throughout. Newly built just four years ago, the home delivers clean, modern finishes, a thoughtful layout, and a lifestyle that blends comfort, convenience, and community—a perfect match for families, professionals, or investors. Open-Plan Living with High Ceilings and Modern Finishes Step inside to discover a bright, spacious open-plan kitchen, dining, and living area designed for easy living and effortless entertaining. High ceilings enhance the airy feeling, while tile flooring throughout, granite countertops, high-end cabinetry, and stainless steel appliances create a beautifully modern aesthetic. With a full bathroom on the ground floor, the layout supports both everyday practicality and guest comfort. Two Ensuite Bedrooms Designed for Privacy and Flexibility On the second floor, you’ll find two generous ensuite bedrooms, each offering ample room for relaxation and personalization. These well-proportioned spaces make this townhouse ideal for couples, young families, or shared living arrangements that require privacy and comfort. Largest Backyard in the Complex with Peaceful Lake Views What truly sets this home apart is the largest backyard in the complex, a rare and valuable feature. Overlooking a small lake, the private outdoor space creates a serene backdrop for morning coffee, weekend barbecues, or simply enjoying Cayman’s indoor-outdoor lifestyle. Pet owners and families will appreciate the added space, safety, and versatility this yard provides. Family-Friendly Community with Top-Tier Amenities Ocean Reach is known for its welcoming, community-oriented atmosphere. Residents enjoy access to a large pool, fully equipped gym, pet-friendly environment, and well-kept common areas. The well-run strata and modern infrastructure add peace of mind for both homeowners and investors. Unmatched Convenience in the Heart of Old Crewe Road Located just off Old Crewe Road, with easy access to South Sound, the Linford Pierson Highway, and central George Town, this townhouse delivers unmatched convenience. You’re just minutes from: • Grand Harbour shopping, dining, and services • Schools and family amenities • Cayman Pickleball • Grocery stores, restaurants, and beaches • Camana Bay and George Town, both within a 5-minute drive This central location makes daily living effortless while still providing a calm residential retreat. An Outstanding First Home or Investment Opportunity This townhouse stands out as an exceptional value: • Eligible for the first-time Caymanian buyer stamp duty waiver • Excellent rental history and high demand for investors • Spacious rooms and modern design • Two parking spaces directly in front of the home • Priced for a quick sale The combination of a well-run strata, modern build quality, and superb location ensures strong long-term appeal.

Essential Information

Type Condominium (For Sale)	Status Pen/Con	MLS 420465	Listing Type Condo
---------------------------------------	--------------------------	----------------------	------------------------------

Key Details

Block & Parcel 20D,438H16	Den No	Year Built 2021
-------------------------------------	------------------	---------------------------

Pets Allowed
Yes

Additional Feature

Foundation
Slab

Property Feature

Furnished