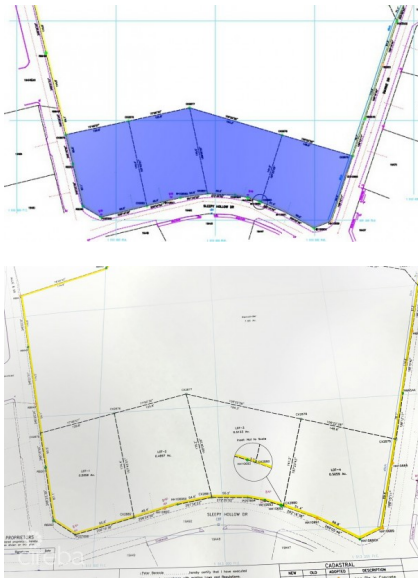


## INDUSTRIAL LAND - 0.5059 ACRES LOT 4

W Bay Bch South, West Bay, Cayman Islands

MLS# 420226

**CI\$1,873,145**



**Kerri Kanuga**  
345-916-7020  
kerri@tridentproperties.ky

0.5059 Acres | Industrial Zoning | Central & High Traffic Area One of the most prime development parcels remaining in George Town's industrial corridor and the last available lot in sought after "Industrial Park". This 0.5059 acre site offers unmatched potential for mixed-use commercial or industrial development, ideally suited for warehousing, logistics, retail, or manufacturing. Strategically positioned in a high traffic, central location, the property sits just minutes from the Owen Roberts International Airport, with easy access to the Airport Access Road, Esterley Tibbetts Highway, and Camana Bay. This is a rare opportunity to acquire one of the last few industrial lots in the heart of George Town, ready for immediate development or long-term investment

### Essential Information

|                                |                          |                      |                                   |
|--------------------------------|--------------------------|----------------------|-----------------------------------|
| Type<br><b>Land (For Sale)</b> | Status<br><b>Pen/Con</b> | MLS<br><b>420226</b> | Listing Type<br><b>Industrial</b> |
|--------------------------------|--------------------------|----------------------|-----------------------------------|

### Key Details

|                        |                                     |                        |                                     |                  |
|------------------------|-------------------------------------|------------------------|-------------------------------------|------------------|
| Width<br><b>149.00</b> | Block & Parcel<br><b>19A,89LOT4</b> | Depth<br><b>145.00</b> | Block & Parcel<br><b>19A,89LOT4</b> | Den<br><b>No</b> |
|------------------------|-------------------------------------|------------------------|-------------------------------------|------------------|

Acreage  
**0.5059**

**Additional Feature**

Block  
**19A**

Parcel  
**89LOT4**

Views  
**Garden View**

Zoning  
**Light Industrial**

Road Frontage  
**300**

Soil  
**Marl**