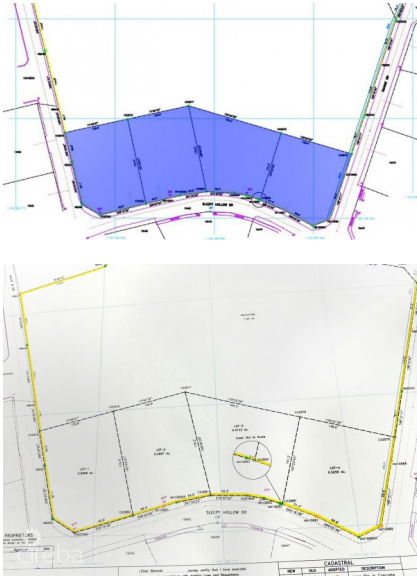


INDUSTRIAL LAND - 0.4997 ACRES LOT 2

W Bay Bch South, West Bay, Cayman Islands

MLS# 420225

CI\$1,850,189



Kerri Kanuga

345-916-7020

kerri@tridentproperties.ky

0.4997 Acres | Industrial Zoning | Central & High Traffic Area One of the most prime development parcels remaining in George Town's industrial corridor and the last available lot in sought after "Industrial Park". This 0.4997 acre site offers unmatched potential for mixed-use commercial or industrial development, ideally suited for warehousing, logistics, retail, or manufacturing. Strategically positioned in a high traffic, central location, the property sits just minutes from the Owen Roberts International Airport, with easy access to the Airport Access Road, Esterley Tibbetts Highway, and Camana Bay. This is a rare opportunity to acquire one of the last few industrial lots in the heart of George Town, ready for immediate development or long-term investment

Essential Information

Type	Status	MLS	Listing Type
Land (For Sale)	Pen/Con	420225	Industrial

Key Details

Width	Block & Parcel	Depth	Block & Parcel	Den
125.00	19A,89LOT2	176.20	19A,89LOT2	No

Acreage
0.4997

Additional Feature

Views
Garden View

Zoning
Heavy Industrial

Road Frontage
125

Soil
Marl

Block
19A

Parcel
89LOT2