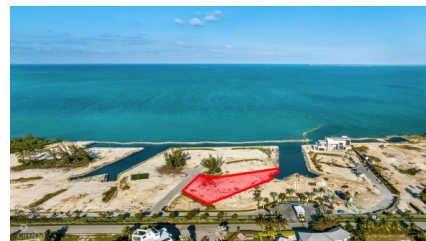
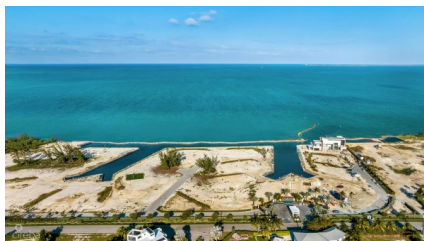


DIAMOND'S EDGE WATERFRONT ESTATE LOT 10

W Bay Bch North, West Bay, Cayman Islands

MLS# 415590

US\$2,245,000





Kerri Kanuga
345-916-7020
kerri@tridentproperties.ky

Build your dream home in one of the last remaining oceanfront lots in Cayman. Located on the North Sound, with unparalleled views and direct boating access this .6754 acre lot enjoys year round breezes and obstructed views of the North Sound. With high-end cantilevered docks built-in for every homeowner along with a native stone seawall surrounding the oceanfront canals you are ensured long term reinforcement and stability and your piece of paradise will have the seamless feel that makes this enclave unique. From 24-hour manned CCTV security entrance gates to customized streetlights and curbing along with special design details in the common areas – manicured spaces, extensive landscaping, on site maintenance, private refuse collection and underground utilities – they all work in harmony to ensure that Diamond’s Edge is finished to the highest standards. Presenting a unique oceanfront enclave at Cayman’s Most Distinctive Address. Diamond's Edge... A Rare Offering for the Discerning Few!

Essential Information

Type	Status	MLS	Listing Type
Land (For Sale)	Current	415590	Beach/Hotel/Tourism

Key Details

Width	Block & Parcel	Depth	Block & Parcel	Den
200.00	17A,358	240.00	17A,358	No
Acreage				
0.6475				

Additional Feature

Block	Parcel	Views	Zoning
17A	358	Canal Front, Water Front	Hotel/Tourism
Sea Frontage	Road Frontage	Soil	
100	211	Marl	