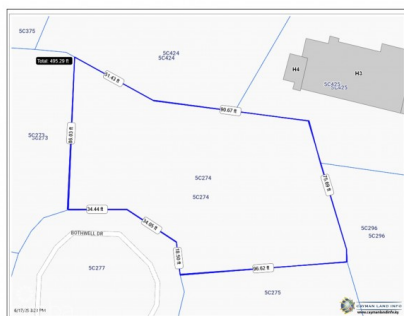
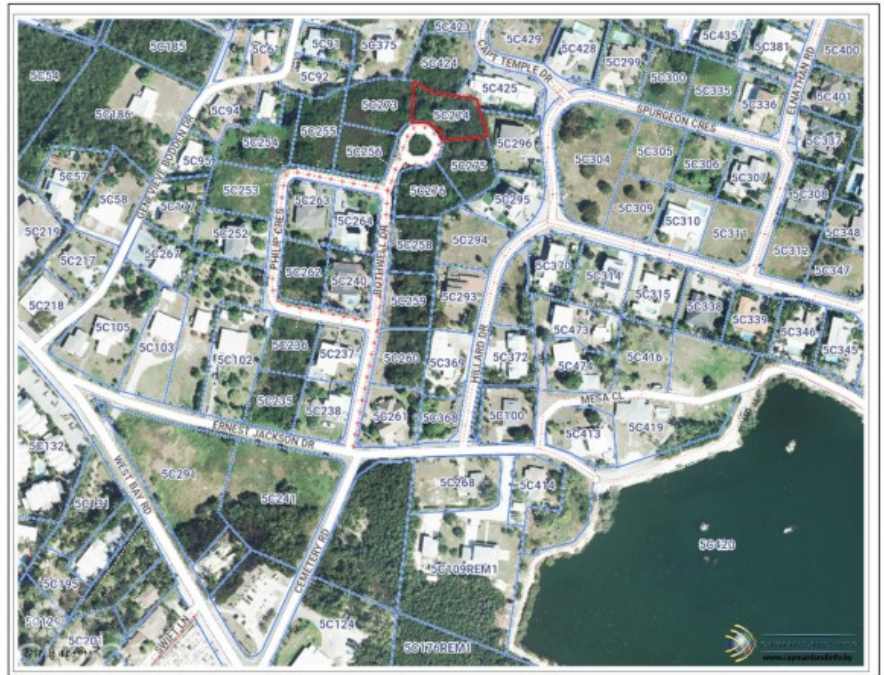


WEST BAY HOUSE LOT ACROSS FROM CEMETERY BEACH

W Bay South, West Bay, Cayman Islands

MLS# 419439

CI\$465,000





Kerri Kanuga
345-916-7020
kerri@tridentproperties.ky

Introducing an exceptional homesite in Upper Land, a peaceful and family-friendly neighborhood just off West Bay Road/Seven Mile Beach corridor. Positioned at the end of a quaint cul-de-sac with a newly laid road, this 0.28-acre parcel sits steps from multiple access paths to Cemetery Beach, one of Cayman’s most cherished stretches of shoreline known for its calm waters, vibrant marine life, and unforgettable sunsets. From this address, the heart of Seven Mile Beach living is truly at your fingertips. A 20-minute or less stroll connects you to the Kimpton, Public Beach, The Grove, the Four-Way Stop, cafés, restaurants, pickleball and tennis courts, and everyday conveniences including West Bay Fosters. The surrounding area offers an effortless, family-friendly lifestyle, perfect for biking, morning walks, and embracing the natural balance of garden tranquility and beachside living. The site itself is beautifully suited for a custom family home, offering generous design flexibility with room for outdoor living, a pool, and a private garden retreat. You may even choose to incorporate a casita or in-law suite, a private guest hideaway that can seamlessly transition into a profitable vacation rental or long-term lease. Few locations offer this balance of tranquility and convenience: moments from Cemetery Beach and easily connected to the amenities of Seven Mile Beach, this homesite provides an ideal setting to design and build the lifestyle your family will love. Call today to arrange your private site tour. Outlines approximate. Some Images Sourced from www.caymanlandsinfo.ky.

Essential Information

Type	Status	MLS	Listing Type
Land (For Sale)	Pen/Con	419439	Low Density Residential

Key Details

Width	Block & Parcel	Depth	Block & Parcel	Den
140.00	5C,274	86.00	5C,274	No
Acreage				
0.2870				

Additional Feature

Block	Parcel	Views	Zoning
5C	274	Inland	Low Density residential
Road Frontage	Soil		
86	Marl		