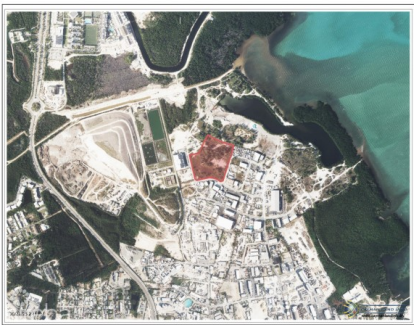


## LAST AVAILABLE INDUSTRIAL LAND IN PRIME GEORGE TOWN LOCATION

W Bay Bch South, West Bay, Cayman Islands

MLS# 419896

**CI\$22,879,000**



**Kerri Kanuga**

345-916-7020

kerri@tridentproperties.ky

9.55 Acres | Industrial Zoning | Central & High Traffic Area One of the most prime development parcels remaining in George Town's industrial corridor and the last available lot in sought after "Industrial Park". This 9.55 acre site offers unmatched potential for a mixed use commercial or industrial development, ideally suited for warehousing, logistics, retail, or manufacturing. Strategically positioned in a high traffic, central location, the property sits just minutes from the Owen Roberts International Airport, with easy access to the Airport Access Road, Esterley Tibbetts Highway, and Camana Bay. This is a rare opportunity to acquire one of the last large, developable industrial parcels in the heart of George Town, ready for immediate development or long term investment.

### Essential Information

Type	Status	MLS	Listing Type
<b>Land (For Sale)</b>	<b>Current</b>	<b>419896</b>	<b>Industrial</b>

Key Details

Width	Block & Parcel	Depth	Block & Parcel	Den
611.00	19A,89	728.00	19A,89	No
Acreage				
9.5500				

Additional Feature

	Block	Parcel	Views
	19A	89	Garden View
Zoning	Road Frontage	Soil	
Light Industrial	1637	Marl	