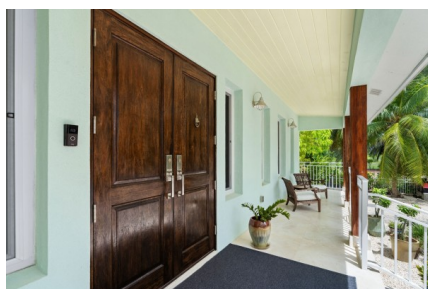


SUNRISE LANDING FAMILY HOME

Savannah, Rum Point/Kaibo, Eastern Districts & North Side, Cayman Islands

MLS# 419780

CI\$1,850,000





Kerri Kanuga
345-916-7020
kerri@tridentproperties.ky

Executive Waterfront Home in Sunrise Landing Located in the highly sought-after community of Sunrise Landing, this stunning executive waterfront home is a must-see. Perched twelve feet above sea level and thoughtfully designed, it offers the perfect blend of safety, style, and comfort, a dream spot for waterfront living and family life Step inside to find soaring ceilings and light-filled rooms throughout. At the heart of the home, the chef’s kitchen boasts a large granite island, abundant storage, a butler’s pantry, and premium appliances, perfect for entertaining friends and family The primary suite, conveniently located on the main level, features a spa-inspired walk-in shower and a spacious walk-in closet. Upstairs, two additional ensuite bedrooms are separated by a versatile landing ideal as a children’s playroom or study area. Outdoor living is equally impressive: • Expansive screened patio for year-round dining and entertaining • A resort-style swim spa framed by lush, low-maintenance gardens built for the climate • A variety of mature fruit trees • A custom 80-foot boat dock with swim ladder and floating jet ski dock Additional highlights include a guest suite with kitchen and bath above the two-car garage, custom-built storage, and exceptional efficiency features: • Custom tilt-and-turn, impact-rated tinted windows • Spray foam insulation in attic and exterior walls • Propane appliances and a 30KW propane generator Built in 2017, this home combines modern efficiency with classic style and the kind of waterfront living families love

Essential Information

Type	Status	MLS	Listing Type
Stand Alone Home (For Sale)	Current	419780	Single Family Home

Key Details

Bed	Bath	Block & Parcel	Den
4	4.5	27C,701	No
Year Built	Acreage		
2017	0.3504		

Additional Feature

			Block
			27C
Lot Size	Parcel	Views	Sea Frontage
0.35	701	Canal Front, Canal View	100
Foundation	Garage	Zoning	
Slab	2	Low Density residential	

Property Feature

FurnishedDen