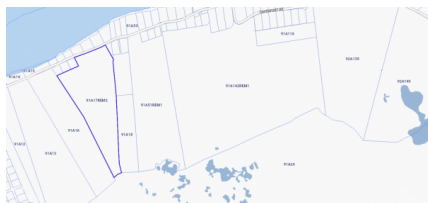


## 17 ACRES LITTLE CAYMAN NORTH EAST LAND

Little Cayman East, Cayman Brac and Little Cayman, Cayman Islands

MLS# 419251

**US\$599,000**





**Kerri Kanuga**  
345-916-7020  
kerri@tridentproperties.ky

**Elevated Beachfront Land with Endless Potential** This expansive Little Cayman beachfront land opportunity spans 17.2 acres along the tranquil northeast coast, offering a rare chance to develop, invest, or build your personal island estate on one of the Caribbean’s most untouched shorelines. Set on parcel 91A/17REM2, this elevated land parcel offers both seclusion and potential, with 150 feet of width and protected views over a stunning reef-fringed shoreline. Whether you envision a single private residence, a low-density eco-retreat, or a subdivision with beach access, this property offers unmatched versatility in one of the region’s most serene environments. **A Development Opportunity That Stands Apart** The land is freehold, with no current covenants in place, and allows for flexibility in planning. The absence of a land certificate at this stage provides a blank slate for investors to work with their vision, tailored to zoning and planning goals. **Unspoiled Beauty, Unmatched Location** What makes this parcel truly exceptional is its position: overlooking a quiet, reef-protected stretch of ocean that’s both breathtaking and ecologically rich. This area of Little Cayman is known for its peace, privacy, and extraordinary natural surroundings. Elevated terrain adds natural drainage and enhances long-term usability for any future structures. This is not only a land purchase—it’s a commitment to a lifestyle defined by nature, quietude, and the opportunity to create something enduring. Whether you're looking to develop a visionary project or invest in one of the island’s last untouched coastal holdings, this Little Cayman beachfront land offers rare value and infinite potential. How do you want to live your life? Opportunities like this are disappearing fast. Contact today to explore the possibilities and take the next step toward your vision for island living.

Essential Information

Type	Status	MLS	Listing Type
Land (For Sale)	Current	419251	Med Density Residential

Key Details

Width	Block & Parcel	Depth	Block & Parcel	Den
150.00	91A,17REM2	200.00	91A,17REM2	No
Acreage				
17.0000				

Additional Feature

		Block
		91A
Parcel	Views	
17REM2	Water Front	