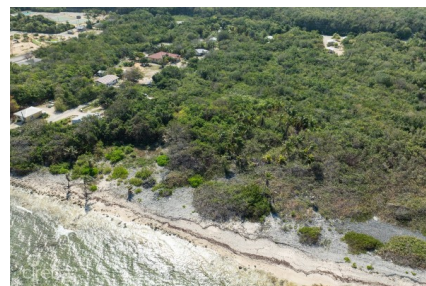
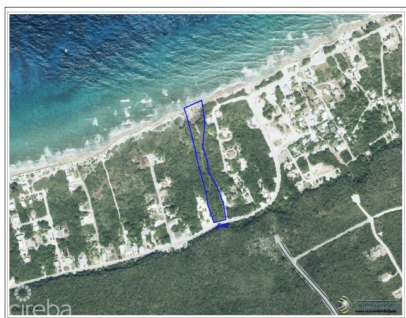


RARE 2.75-ACRE OCEANFRONT PARCEL ON THE NORTH SIDE OF CAYMAN BRAC - PRICE REDUCED!

Cayman Brac East, Cayman Brac and Little Cayman, Cayman Islands

MLS# 418995

CI\$399,000





Kerri Kanuga
 345-916-7020
 kerri@tridentproperties.ky

One of the largest oceanfront parcels currently available in Cayman Brac under CI\$400,000, this exceptional offering presents a rare opportunity to own 2.75 acres of untouched Caribbean coastline on the island's peaceful North Side. This large parcel offers stunning sunset views, cooling ocean breezes, and direct access to the crystal-clear Caribbean Sea, creating the perfect setting for a private beachfront estate, vacation rental cottages, eco-retreat, or boutique development. The property also includes an additional parcel located across the road near the Bluff, providing extra flexibility for future development, parking, guest cottages, or support buildings. With ample acreage, road access, and nearby utilities, this property offers outstanding potential in one of the Caribbean's most stable and desirable island destinations. Property Features • 2.75 acres of prime oceanfront land • Approximately 180 ft of sea frontage • Peaceful North Side location • Additional parcel included near the Bluff • Development potential for residential or tourism use • Stamp Duty exemption possible for eligible development plans Recently reduced from CI\$425,000 to CI\$399,000, representing great value for oceanfront acreage in the Cayman Islands. Opportunities to secure parcels of this size and location on Cayman Brac are increasingly limited. Contact us today for more information.

Essential Information

Type Land (For Sale)	Status Current	MLS 418995	Listing Type Little Cayman/Cayman Brac
--------------------------------	--------------------------	----------------------	--

Key Details

Width 180.00	Block & Parcel 106E,23	Depth 1070.00	Block & Parcel 106E,23	Den No
Acreage 2.7500				

Additional Feature

Views Beach Front, Ocean Front	Sea Frontage 180	Road Frontage 130	Block 106E	Parcel 23
--	----------------------------	-----------------------------	----------------------	---------------------