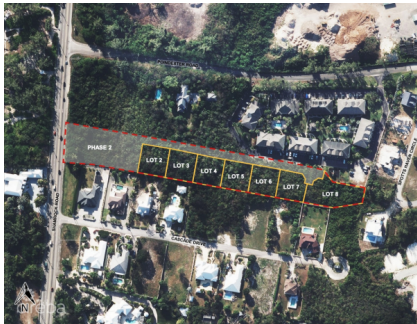


## THE RIDGE, SPOTTS, LOT 6

Spotts, Spotts and Prospect, Cayman Islands

MLS# 418949

**CI\$359,625**





**Kerri Kanuga**  
345-916-7020  
kerri@tridentproperties.ky

The Ridge, Lot 6 – Elevated Coastal Living in Grand Cayman Williams2 Real Estate proudly presents The Ridge, Lot 6, an exceptional opportunity to build your dream home in one of Grand Cayman’s most sought-after new communities. Nestled along the scenic coastline in Spotts, this exclusive subdivision offers an unbeatable combination of high elevation, serene natural beauty, and modern island conveniences. Premium Location & Unmatched Elevation Perched high above sea level, The Ridge is a newly developed subdivision designed for those who value tranquility without sacrificing convenience. This exclusive community features seven spacious land lots and 12 luxury apartments, creating an intimate yet vibrant residential community. A Community Designed for Island Living • The Ridge, Lot 6, offers ample space to design your dream home, which will capture the beauty of the Caribbean while maximizing privacy and comfort. • Strategically located in Spotts, Off Shamrock Road, The Ridge ensures seamless access to essential amenities, top schools, shopping centers, and the island’s best dining. • Enjoy the convenience of George Town’s bustling business district, just a short drive away, while retreating to your serene, elevated sanctuary at the end of the day. Why Choose The Ridge, Lot 6? -Peaceful yet well-connected community -Near Spotts Beach—one of the island’s best spots for turtle-watching -Modern infrastructure & premium neighborhood design -Proximity to top schools, restaurants, and shopping -Exclusive subdivision with limited availability Your Opportunity to Build in Prime Cayman Islands Real Estate The Ridge offers a rare chance to secure a land lot in an exclusive, high-elevation community. Whether you're looking to build a modern island retreat, a family home, or an investment property, Lot 6 is the perfect foundation for your vision. Don’t miss out on this limited opportunity! Contact us today to learn more about The Ridge, Lot 6, and take the first step toward your ideal island lifestyle. How do you want to live your life?

Essential Information

Type	Status	MLS	Listing Type
Land (For Sale)	Current	418949	Low Density Residential

Key Details

Width	Block & Parcel	Depth	Block & Parcel	Den
100.90	25B,678LOT6	101.90	25B,678LOT6	No
Acreage				
0.2300				

**Additional Feature**

Views  
**Inland**

Zoning  
**Low Density  
residential**

Road Frontage  
**100.9**

Block  
**25B**

Parcel  
**678LOT6**